



Yamato

Yamato Benchtop Steam Autoclave Sterilizer

For Information and to Order;

Contact Us At

800-574-2748 323-770-0634

Email: sales@LRE.comWeb Site: www.LRE.com

Steam Autoclave Sterilizer Models: SK101C/111C

Operating
temp. range

50°C to 126°C

Max. operational
Pressure

0.142MPa

Internal capacity

18L

Space-Saving, Low Cost Benchtop Steam Autoclave Sterilizer - Ideal for Research Facilities

18L
SK101C

Yamato Steam Autoclave with an 18L chamber for research processes and areas that are limited in space. High pressure steam is the most widely used method for sterilization due to its speed, reliability, and effectiveness. Newly designed small capacity sterilizers provide a safe, reliable high pressure steam sterilizing environment within a self-contained unit that is particularly easy to use. This Yamato steam sterilizer is ideal for a wide range of applications.

Easy to use

- Benchtop size - 18 Liter
- Powerful 1500W pipe heater
- Easy to read 4 digit LED display
- Built in Drain Valve for easy cleaning
- Programmable sterilizing and temperature functions
- Timer Setting Range 0 to 999 min.
- Space-saving

Increased Safety Features

- Water level detection sensor with alarm
- Overheat Protection Sensor
- Lid closure sensor (Inter lock)
- Pressure Lamp Indicator
- Increased chamber wall thickness (2mm)
- New improved silicon lid gasket

Yamato Autoclave Specs:

Contact Us For Discounted Prices

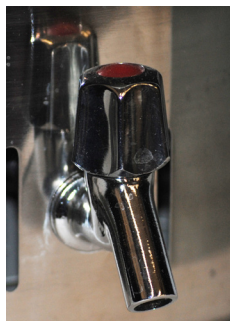
Model	SK101C	SK111C
System	Automatic high pressure steam autoclave sterilizer	
Temp. setting range	50 to 126°Deg. C (122 to 258 Deg. F)	
Max. operational pressure	0.142MPa at 126°C (20.6 PSI)	0.2MPa (29 PSI)
Interior Material	Stainless steel SUS 304	
Heater	1500 W Stainless Steel Heating Pipe	
Temp. controller	PID control by microprocessor	
Temp. setting method	Digital setting by ▲/▼ keys	
Temp display method	Digital display by green LED	
Timer	0 min. to 999 min.	
Safety Device	Pressure safety valve, Low water sensor, Dual exterior walls, built in Inter-lock sensor	
Internal dimensions	Dia. 11" x 10.8"	
External dimensions	Dia 13.5" x 21.6"	
Internal capacity	18L	
Power source 50/60Hz	AC 115V, 15A with plug	AC 220V, 9A no plug, round terminal
Weight	39 Lbs	
Accessories	1 stainless steel mesh basket (10" x 9.4") and stainless steel bottom plate	

Control Panel

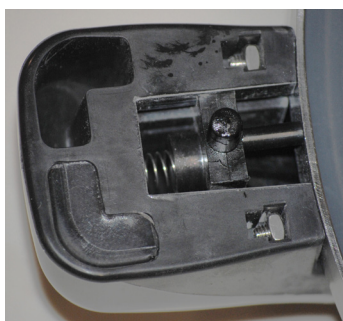


- New 4 digit LED display

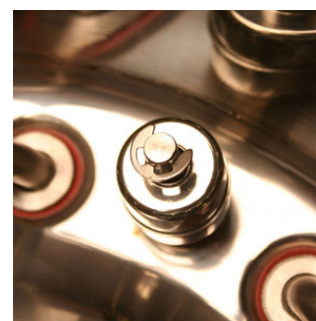
Key Features of the Yamato SK Series Autoclave Sterilizers



- Drain valve for easy clean up



- New lid closure sensor (Inter-Lock)



- Low water sensor prevents damage by sounding an alarm and stopping all operations until water is refilled

Yamato Sterilizer Models SK101C/111C